

# *RM-6 AutoScanner*

A Wehrli & Associates Inc. Instrument

## *UNATTENDED SCANNING - ABSOLUTE PRODUCTION*



- Roll film or individual frame scanning
- Automatic image edge registration
- Real time tonal correction for best image quality
- Pressure plate & film lifted during film transport
- Motorized spools for automated film advancement
- Project management with multiple setups/jobs
- Auto-rewind of film when scan session complete
- Files names count up or down
- Consistent, high geometric accuracy without resampling
- Best scan parameters automatically set by system
- 12-bit radiometric resolution (4096 gray levels)
- Histogram analysis and manipulation
- High optical resolution of 8  $\mu\text{ms}$
- Cool LED illumination system
- Real time scan resolutions 8,12,16,20,24,32 $\mu\text{m}$  and more
- Unsurpassed dynamic range of 2.8D
- Superior radiometric accuracy

# RM-6 AutoScanner

A Wehrli & Associates Inc. Instrument

<i>Technical Data</i>	
<b>Resolution</b>	8µms optical (3175 ppi) 12,16,20,24,32,40...128µms in real time by binning Other sizes by post process
<b>Media</b>	Roll Film (manual/automatic) Individual Frame Positive or Negative B/W or Color transparency
<b>Geometric Accuracy</b>	±3µms RMSE <i>without resampling image data</i>
<b>Geometric Precision</b>	1µm resolution
<b>Radiometry</b>	12 bits/channel
<b>Optical Density</b>	0.001 to 3.4D
<b>Dynamic Range</b>	2.8D
<b>Illumination</b>	Computer controlled LED 30000 hours
<b>Sensor</b>	Tri-linear CCD, Sony 5300 Fully compensated
<b>Scanning Range</b>	Roll Unit 260x260mm Cut Sheet 275x320mm
<b>Image Format</b>	Tiled TIFF, Strip TIFF TIFF 6.0 JPEG
<b>Operating System</b>	Windows 2000/XP™
<b>Dimensions</b>	0.83x1.10x1.00 M
<b>Weight</b>	165 Kg.

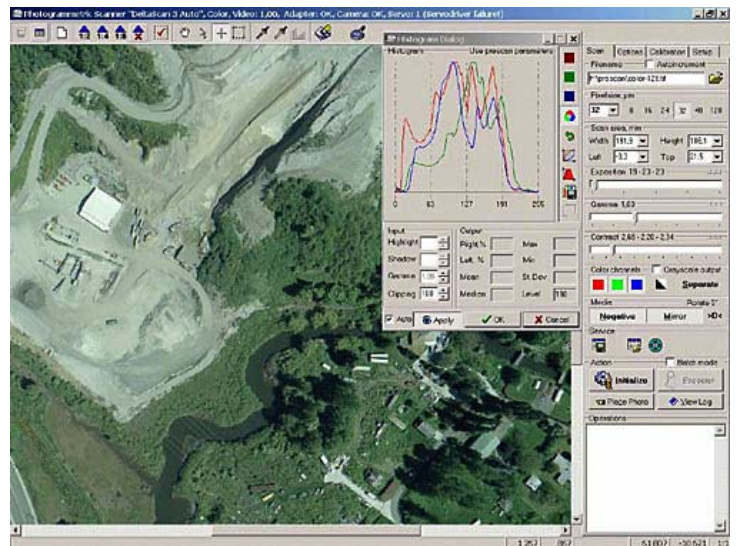


RM-6 AutoScanner

<i>Mode</i>	<i>Pixel Size</i>	<i>Time</i>
B/W	8 µms	12 minutes
B/W	12 µms	8 minutes
B/W	16 µms	7 minutes
B/W	24 µms	6 minutes
<i>Mode</i>	<i>Pixel Size</i>	<i>Time</i>
Color	8 µms	35 minutes
Color	12 µms	22 minutes
Color	16 µms	16 minutes
Color	24 µms	13 minutes

## *Post Process Editing Functions*

- Complete image viewer
- Histogram analysis
- Contrast/Brightness/Gamma corrections
- Merge/split color channels
- Group mode image viewing
- Resample to any pixel size
- Debanding, dodging
- Pyramid Building



Main Menu During Setup Procedure